

# 20 MM BORE STAINLESS STEEL METRIC CYLINDER

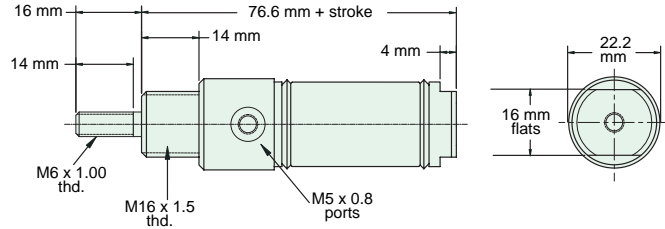


## M-SDR-12-□-□

Double Acting



**Mount:** Stud **Standard Stroke Lengths:** 10 mm, 25 mm, 40 mm, 50 mm, 80 mm, 100 mm, 125 mm, 160 mm, 200 mm, 250 mm, 300 mm, 350 mm, 400 mm, 450 mm, 500 mm, 550 mm, 600 mm  
**Type:** Rotating Rod  
**Options:** B, R, V



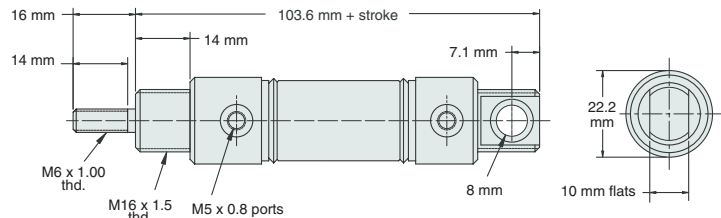
Nut included, but not shown on drawing

## M-UDR-12-□-□

Double Acting



**Mount:** Universal **Standard Stroke Lengths:** 10 mm, 25 mm, 40 mm, 50 mm, 80 mm, 100 mm, 125 mm, 160 mm, 200 mm, 250 mm, 300 mm, 350 mm, 400 mm, 450 mm, 500 mm, 550 mm, 600 mm  
**Type:** Rotating Rod  
**Options:** B, R, V



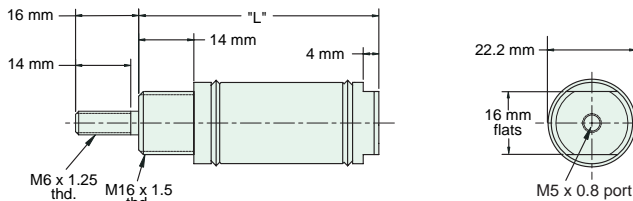
Furnished without nut(s). Order Part No. NM16-150.

## M-SSR-12-□-□

Single Acting



**Mount:** Stud **Standard Stroke Lengths:** 10 mm, 25 mm, 40 mm, 50 mm, 80 mm, 100 mm, 125 mm, 160 mm  
**Type:** Rotating Rod  
**Options:** B, R, V



Nut included, but not shown on drawing

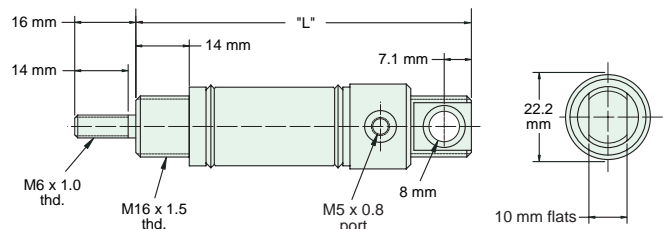
"L" (mm) for Standard Strokes								
Stroke	10	25	40	50	80	100	125	160
	68	83	116	126	191	211	254	324

## M-USR-12-□-□

Single Acting



**Mount:** Universal **Standard Stroke Lengths:** 10 mm, 25 mm, 40 mm, 50 mm, 80 mm, 100 mm, 125 mm, 160 mm  
**Type:** Rotating Rod  
**Options:** B, R, V



Furnished without nut(s). Order Part No. NM16-150.

"L" (mm) for Standard Strokes								
Stroke	10	25	40	50	80	100	125	160
	95	110	143	153	218	238	281	351